



WHO KNEW THE INDUSTRY'S MOST ADVANCED IVF COULD BE SO SIMPLE?

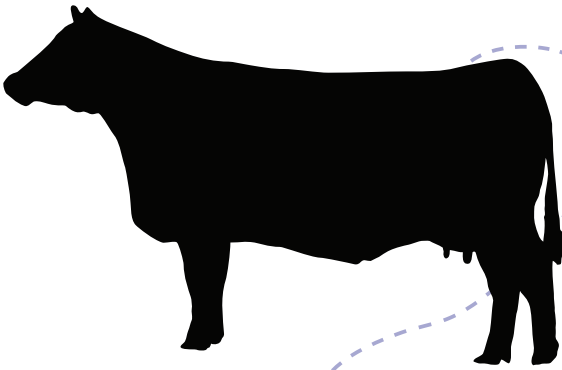
## OOCYTE COLLECTION

A certified Vytelle technician will come to you at your convenience to collect the unfertilized oocytes (eggs).

- Collect eggs
- Wash, clean and count eggs
- Eggs are then fertilized by one or multiple sires

1

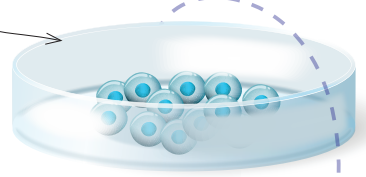
OVUM PICK-UP



## NO FSH

The Vytelle process does not use Follicle Stimulating Hormone (FSH), which has all kinds of benefits for the animal, the product and your business.

- More cost-effective
- Requires no shot schedule
- Allows weekly collection
- Ability to collect from pregnant cows
- Easier on animals
- All-natural process



HORMONE-FREE PROCESS

2

EMBRYO PRODUCTION

## LABORATORY FERTILIZATION

Once the eggs are back at our lab, they are carefully fertilized using chosen sires according to your needs.

- 7-day process from egg to embryo
- Fresh or frozen embryos based on your needs



## NO FETAL CALF SERUM

We develop embryos using a propriety culture system with absolutely no fetal calf serum, resulting in high-quality, freezable embryos.

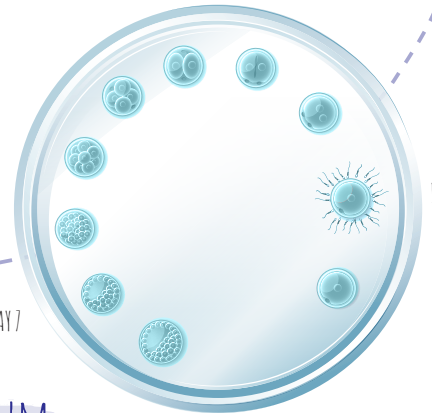
DAY 4

DAY 6

DAY 7

DAY 2

DAY 0



NO FETAL CALF SERUM DURING EMBRYO DEVELOPMENT

3

IMPLANTATION

## ONE PAYMENT ONLY

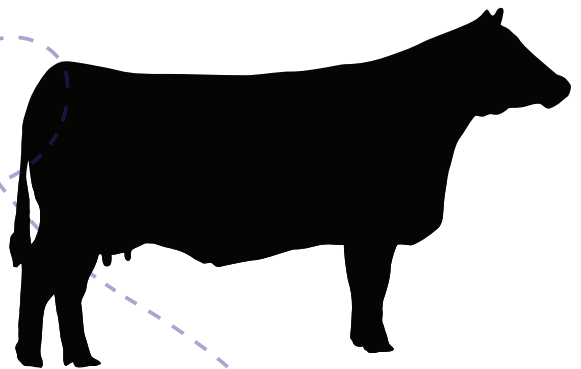
The only payment you make is upon receiving your Grade 1 embryos. If a Grade 1 embryo is not achieved, there is no charge.

## MATCHING CYCLES

On the day of implantation, the embryo is transferred to qualified recipients.

## SKILLED TECHNICIANS

For optimal results, we recommend using Vytelle-certified embryo transfer technicians.



VYTELLE-CERTIFIED TECHNICIANS COME TO YOU

4

AFTER IVF



**Vytelle**

TO LEARN MORE ABOUT FAST FORWARDING YOUR HERD, CONTACT US AT 866-689-3477 OR VISIT VYTELLE.COM.



## CONSULT YOUR VETERINARIAN

If you have concerns about the length of gestation or any other questions about IVF calves, contact your local veterinarian.

## FOLLOW STANDARD PROCEDURE

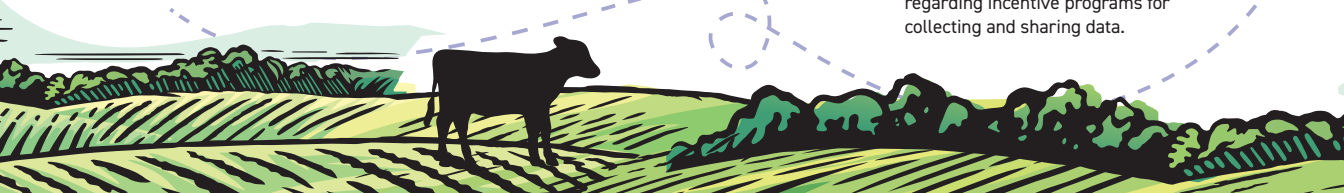
Once your calves are born, follow standard birthing protocols for proper care of the dam and offspring.

## COLLECT DATA

To ensure success with your IVF calves, pay close attention to breeding and calving dates and collect key data regarding your IVF animals, including:

- Embryo loss
- Gestation length
- Sex of calf
- Birth weight of calf
- Calf health status

Ask your Vytelle representative regarding incentive programs for collecting and sharing data.





**TOGETHER,  
LET'S FAST  
FORWARD  
GENERATIONS,  
BUSINESS  
AND LIFE.**